

Stamp*Bulletin*

NO. 297 >> MARCH - APRIL 2009



AUSTRALIA

AUSTRALIA POST

Celebrating

200
years

EARTH HOUR

QUEEN'S BIRTHDAY

COCOS (KEELING) ISLANDS:
400 YEARS

AAT POLES & GLACIERS

INDIGENOUS CULTURE





© Copyright 2009 Australian Postal Corporation. All rights reserved. Australia Post stamp designs and philatelic products are subject to copyright and may not be reproduced without permission. All applications for the reproduction of Australian stamps should be made in writing to:

Group Manager
Philatelic Group – Australia Post
GPO Box 1777
MELBOURNE VIC 3001
Fax: 03 9204 7744
ABN: 28 864 970 579

Stamp Bulletin Australia is produced by Australia Post's Philatelic Group. To the best of Australia Post's knowledge, all information contained in this *Bulletin* was correct at the time of printing. Australia Post will not accept any responsibility for errors, oversights or changes to information which may occur after printing.

The availability of products advertised in this *Bulletin* is subject to demand, availability of stock or as otherwise notified from time to time. For availability of products, visit our website at:
www.auspost.com.au/stamps

Where non-Australia Post products or businesses are advertised, Australia Post does not represent any association with the business advertised or the supply of goods or services by those businesses.

Dear Collectors

Welcome to the second *Australian Stamp Bulletin* for 2009. In this edition we feature the very special collectable range of stamp products from the 2009 Australia Post Australian Legends Award stamp issue. The four Australians that received the award this year are the Academy Award® winning actors Nicole Kidman, Russell Crowe, Cate Blanchett and Geoffrey Rush. Each Australian Legend is specially featured on two stamps including one in character from a movie of their choice. My favourite product from the range is the prestige booklet set, which features individual stamps and stories.

Many people are not aware that each year, as part of the awards, Australia Post commissions a book on the Australian Legends. Keep an eye out for this year's titled *Shining Lights* which is a fascinating read about the careers of these four prominent Australian actors, who have each received world recognition for the skill they bring to their craft.

If you haven't had a chance by now to visit our new look website make sure you try and set aside some time to do so this month (www.stamps.com.au). The site is proving to be popular and it also makes buying your favourite things so easy and convenient.

Our first stamp issue in March is AAT: Poles and Glaciers, which is part of an omnibus from over 30 countries. The stamp issue highlights the possible threat to these important geographical areas through global warming and is of significance to Australia through our interest in the Antarctic Territory. All of the stamps issued by participating countries feature an ice crystal logo by Finnish designer, Saku Heinänen.

2009 is a special year for Australia Post as we celebrate 200 years of postal services in Australia and trace our heritage back to the appointment of Isaac Nichols as the first postmaster in Australia in 1809. The stamp release titled Australia Post – 200 Years looks at different ways in which postal services have been a part of local communities, and the nation as a whole, during our growth and development over two centuries. This issue includes our second postal and numismatic cover for the year and a prestige booklet that captures the essence of Australian postal services through the years. This unique booklet also contains a special variation of the sheetlet of 10 stamps.

In April, we release a stamp issue featuring works by five Indigenous artists. The paintings are from collections held in Australia's major public collections of Indigenous art. This year we also celebrate a 400-year milestone with Cocos (Keeling) Islands: 400 Years and the first European sighting of the islands in 1609 by Captain William Keeling of the English East India Company.

Until next time,

Noel Leahy, Manager, Philatelic Group

CONTENTS

4	Legends 2009 – Australian Legends of the Screen
6.....	AAT: Poles and Glaciers
8.....	Earth Hour
10.....	Australia Post – 200 Years
14.....	Indigenous Culture
16.....	Queen's Birthday
17.....	Cocos (Keeling) Islands: 400 Years
18.....	Talking Stamps
19.....	Post Master Gallery
20	Souvenir Sheets
22.....	Coins
24.....	Specialist Notes
25.....	Seven Seas

Front cover shows a trainee
at the training school for mail
sorters, Melbourne, c1950.

2009 AFL & NRL souvenir packs AVAILABLE IN MARCH



Each of these team
souvenir stamp
packs includes
club information
and images, along
with 20 of the 55c
Globe and Map
stamps.

Support your team
in season 2009!

\$15.95 each

(Refer to page 27 for your team's mail order code.)

2009 Australian Open souvenir stamp sheet



A great souvenir of all of
the action in this generic
presentation of the stamp
sheet that was available
onsite at the event.

1514467 \$15.95

55c... Nicole Kidman
 55c... Russell Crowe
 55c... Geoffrey Rush
 55c... Cate Blanchett
 55c... *Moulin Rouge!*
 55c... *Gladiator*
 55c... *Shine*
 55c... *Elizabeth: The Golden Age*



1595219 book *Shining Lights*



s-adhesive booklets (5 including a mixed)

AUSTRALIAN LEGENDS OF THE SCREEN

22 JANUARY 2009



Every year since 1997 Australia Post has honoured the achievements of eminent Australians with a stamp release marking the Australia Post Australian Legends Award. The award itself comprises a gold replica stamp presented to each recipient at an Australia Day lunch. This year's legends are Australian film actors who have been recognised worldwide. All have won Academy Awards for acting.

Nicole Kidman (b. 20 June 1967) is one of the highest-paid actresses in the motion picture industry. After making various appearances in Australian film and television, Kidman received her breakthrough role in the 1989 thriller *Dead Calm*. Her performances in several films have won her critical acclaim. In 2003, Kidman received an Academy Award for her performance in *The Hours* and her star on the Walk of Fame in Hollywood. Kidman is also a UNIFEM and UNICEF Goodwill Ambassador, and was made a Companion of the Order of Australia in 2006. Her latest role is as Lady Sarah Ashley in *Australia*.

Russell Ira Crowe (b. 7 April 1964) began his acting career in the 1990s. Early roles were in Australian TV series such as *Police Rescue* and films including *Romper Stomper*. In the late 1990s, he began to appear in US films – such as *L.A. Confidential* (1997). Since 2000, he has been nominated for three Oscars and in 2001 he won the Academy Award for Best Actor in the film *Gladiator*. Crowe received three consecutive Best Actor Oscar nominations for *The Insider*, *Gladiator* and *A Beautiful Mind*. He re-teamed with *Gladiator* director Ridley Scott for *A Good Year* in 2006.

The first major stage role for Cate Blanchett (b. 14 May 1969) was in the 1993 David Mamet play *Oleanna*, for which she won the Sydney Theatre Critics' Best Newcomer Award. Blanchett made her international film debut with a supporting role in *Paradise Road* (1997), and in the same year, her first leading role in Gillian Armstrong's production of *Oscar and Lucinda*. Her first high-profile international role was in *Elizabeth* (1998), which earned her an Academy Award nomination for Best Actress. In 2005, she won an Academy Award for Best Supporting Actress in Martin Scorsese's *The Aviator* playing Katherine Hepburn. Recent films have included *Babel*, *Notes on a Scandal*, *I'm Not There*, *Elizabeth: the Golden Age* and *The Curious Case of Benjamin Button*.

Geoffrey Roy Rush (b. 6 July 1951) was the first Australian-born person to win an Academy Award for acting. He is also the only Australian to win it playing an Australian character. Rush's film debut was in the Australian film *Hoodwink* in 1981 which was quickly followed by Gillian Armstrong's *Starstruck*, the following year. In 1996, he starred in *Shine*, for which he won the Academy Award for Best Actor, becoming the first Australian actor to win an Oscar since Peter Finch. In 1998, he appeared in three major films: *Les Misérables*, *Elizabeth* and *Shakespeare in Love* for which he received an Academy Award nomination for Best Supporting Actor. In 2000, he received his third Academy Award nomination, for *Quills*, in which he played the Marquis de Sade.

TECHNICAL DETAILS

Issue date	22 January 2009
FDI withdrawal date.....	30 March 2009
Denominations	8 x 55c (two x blocks of four)
Stamp/product design ..	Adam Crapp, Australia Post Design Studio
Printer	McKellar
Paper (gummed)	Tullis Russell
(s/adhesive)	B100 s/a
Printing process	Lithography
Stamp size	26mm x 37.5mm
Perforations.....	14.6 x 13.86
Sheet layout	Modules of 50/two sheets
Special feature	Decorative gutters
National postmark	Melbourne, Vic 3000

Nicole Kidman AC: portrait (Newspix/Stuart Ramson); *Moulin Rouge!* Ellen von Unwerth / Art + Commerce / Snapper Media, *Moulin Rouge*™ & © 2001 Twentieth Century Fox Film Corporation. Cate Blanchett: portrait (© Colin Bell / Corbis Outline); *Elizabeth: The Golden Age* courtesy of Universal Studios Licensing LLLP. Russell Crowe: portrait (© Nathaniel Goldberg / Art + Commerce / Snapper Media); *Gladiator* © 2009 DW Studios LLC. Geoffrey Rush: portrait (Earl Carter); *Shine* (Momentum Films and Ronin Films).



1595126 stamp pack

www.auspost.com.au/legends

Legends 2009 film character stamp sheets include copyright statements in the selvage area of the sheet. A full list of 2009 Legends products is available with the accompanying order form or via the website. Products can also be viewed at participating Australia Post outlets.



1595001 first day cover (gummed)



1595220 maxicard set (4)

55c..... Snow petrel
Padodoma nivea
\$2.05....Jade iceberg

AAT: POLES AND GLACIERS

4 MARCH 2009



1599142 minisheet

The ice crystal logo used in the design of the minisheet is by the Finnish designer, Saku Heinänen and the ice flowers are taken from a photograph by Frederique Olivier. The symbol will appear on all of the stamps issued by participating countries.

This stamp issue is part of a world-wide initiative involving over 30 national postal administrations. Initiated by Chile and Finland, the issue highlights the importance of the Earth's poles and glaciers and how they are threatened by global warming. The subject is of special importance to Australia because of its interest in the Australian Antarctic Territory, where it has continued its extensive scientific research during International Polar Year 2007–09.

The 2006 report by the Australian National Committee on Antarctic Research provides a glimpse of the current situation in Antarctica. While the total ice volume is decreasing in large parts of western Antarctica, in eastern Antarctica – where the Australian Antarctic Territory lies – the ice volumes are increasing slightly, as a result of increased snowfall. This majestically scenic region is the home of much of Antarctica's wildlife, including the snow petrel *Padodoma nivea* pictured on the 55-cent stamp. The two stamps are by Australian designer Doug Pitt. The vast volume of land-based ice in East Antarctica is unlikely to collapse completely with global warming. It will, however, undergo change, particularly in the coastal regions.

55c stamp

The foreground of this design shows a snow petrel *Padodoma nivea*. In the background is a photograph by Wayne Papps of snow petrels over an ice bridge.

\$2.05 stamp

This stamp design uses a photograph of a magnificent jade iceberg by Karl Rollings.



1599013 first day cover (minisheet)



1599126 stamp pack



1599002 fdc (gummed)



1599220 maxicard set (2)

TECHNICAL DETAILS

Issue date	4 March 2009
FDI withdrawal date	1 April 2009
Denominations	1 x 55c, 1 x \$2.05
Stamp design	Doug Pitt
Product design	Sally Piskuric, Australia Post Design Studio
Printer	Tullis Russell
Paper	Energi Print
Printing process	Lithography
Stamp size	37.5mm x 26mm
Minisheet size	120mm x 80mm
Perforations	13.86 x 14.6
Sheet layout	50
Special feature	Nil
National postmark	Kingston, Tas 7050



FIRST DAY OF ISSUE
4 MARCH 2009
KINGSTON TAS 7050

55c.....Lights Out
 55c.....Switch Off
 \$2.05.....Save Energy

EARTH HOUR

11 MARCH 2009



In 2007, WWF–Australia pioneered the now-global annual event Earth Hour. It was conceived to raise awareness of global warming and to show how the small actions of individuals can together make a big difference in reducing greenhouse gas emissions.

Australia Post is a committed supporter of this important initiative and is releasing this stamp issue to help engage the community in efforts to combat global warming by reminding people to turn off lights at 8.30pm on Saturday 28 March 2009.

The stamp designs by Melbourne-based Hoyne Design convey a spirit of personal responsibility, with the messages: “Lights Out”, “Switch Off” and “Save Energy”. While the offbeat visual style connects the viewer emotionally with the animals depicted, the message is a more serious one. The presence of these animals emphasises the need to protect the planet and all life that it sustains by reducing emissions that are harmful to the environment.

In its first year, Earth Hour focused its efforts on Sydney, where some 2.2 million residents and 2,100 businesses expressed a collective glow of consciousness by switching off their lights for one hour. It has been estimated that if the greenhouse gas reduction that was achieved in that hour was sustained for a year it would be equivalent to taking 48,616 cars off the road for a year. Just imagine the impact if worldwide we flicked off our switches daily.

So effective was the Sydney event that Earth Hour became global the following year, with the largest ever voluntary “black out” taking place on the last Saturday of March 2008. Hundreds of cities and towns in 35 countries across seven continents took part in the



1609126 stamp pack



1609300 prestige first day cover

event, with an estimated 50 million people taking action to reduce greenhouse gas emissions. Some of the landmark structures around the world to dim their lights were the Sydney Opera House, New York's Empire State Building, Rome's Colosseum and San Francisco's Golden Gate Bridge. Even the Google homepage went black for the hour!

Turning off the lights for an hour once a year is the most visible element of the Earth Hour campaign, but the deeper objective is to help people make fundamental changes to their everyday routines to minimise their carbon footprint. Switching to energy-efficient bulbs; turning out lights, heating and fans when rooms are not in use; unplugging battery chargers when not in use and turning off equipment rather than leaving it on standby are all easy ways of reducing harmful gas emissions and helping sustain the planet. Needless to say, by decreasing the demand for energy generation, these small acts of environmental responsibility have the bonus of reducing your energy bills.



1609301 stamp & medallion cover (limited edition of 10,000)

TECHNICAL DETAILS

Issue date	11 March 2009
FDI withdrawal date	8 April 2009
Denominations	2 x 55c, 1 x \$2.05
Stamp design	Hoynes Design
Product design	Sharon Rodziewicz, Australia Post Design Studio
Printer	McKellar
Paper	Tullis Russell
Printing process	Lithography
Stamp size	26mm x 37.5mm
Perforations	14.6 x 13.86
Sheet layout	50
Special feature	55c (checkerboard across the gutter)
National postmark	Darkan, WA 6392



1609182 s-adhesive booklet (20 x 55c)



1609001 first day cover

The medallions included with the stamp and medallion cover depict the animals featured on the stamps.



1609220 maxicard set (3)

Celebrating 200 years

AUSTRALIA POST – 200 YEARS

25 MARCH 2009

55c.....First Post Master
55c.....Early Post Office
55c.....Early Post Box
55c.....News from home
55c.....Early airmail
55c.....Home delivery
55c.....Post-war immigration
55c.....Retail PostShop
55c.....Express Post
55c.....Part of every day



1601122 sheetlet



1601002 first day cover (gummed)

This very special issue of 10 stamps celebrates 200 years of postal services in Australia and reflects the contribution they have made to the everyday lives of Australians over the last two centuries.

In 1809 Isaac Nichols became the first postmaster of New South Wales – a position he was to hold for a decade, but Australia's first postman would not be appointed until 1828. He was the servant of Sydney Postmaster, George Panton.

A significant year in Australian postal history was 1838, with the first overland mail service (running between Sydney and Melbourne) and the release of the world's first stamped prepaid stationery. Australia's first uniform postal charges and its first postage stamps were introduced by New South Wales and Victoria in 1850. In 1888, New South Wales issued the world's first commemorative stamps, marking 100 years of colonisation in Australia.

Postal services continued to grow along with the population and were vital to the development of the major cities, towns, and regional communities, which relied on its arrival to keep pace with the rest of the country, especially at critical times in our history. As ships and horses were the only way to deliver the mail in these early days, some deliveries could take weeks. As railways developed the carriage of mails between the Australian communities that dotted the nation became more rapid.



1601182 s-adhesive booklet (10 x 55c)

With Federation came the establishment of the Postmaster General's Department to provide postal services to the nation. Our first stamp designed for the Commonwealth of Australia was released to the public in 1913 – a kangaroo in a map of Australia. Until that time, state stamps were issued to meet the needs of the public.

In 1924 the Cobb & Co mail service had its last run and just six years later the world's first mechanical mail handling was introduced at the Sydney Mail Exchange.

Experimentation with air transport was to see major advancements in mail carriage. The commencement of regular air flights between Australia and England in 1934 also meant an increase in the amount of airmail carried. Many mail users were beginning to favour airmail over the traditional sea mail because it was quicker.

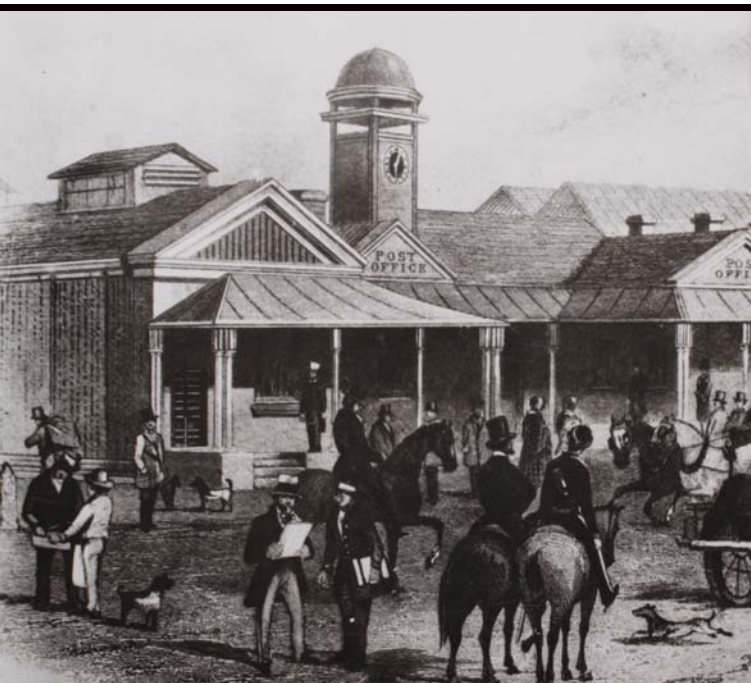
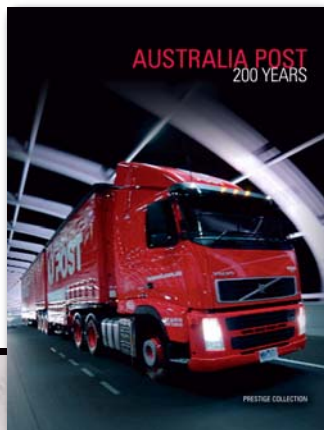
During wartime, letters received by Australian soldiers carried much needed news from home and helped boost morale.

With over a million people migrating to Australia in the years after World War II, news from abroad was a cherished reminder of loved ones and friends left behind. For most, it would continue to be the only line of communication for many years until the telephone became an affordable alternative.

A simulated watermark will be a feature of the stamp issues celebrating 200 years of Australian postal services.

This larger size prestige booklet includes three sheetlets of the 10 stamps – one is imperforate.

1601184 prestige booklet



This sketch by ST Gill shows Melbourne's Elizabeth Street post office in 1853. The land had earlier been allocated (1840) for the purpose of establishing a post office building and the site would be later used for the building of the Melbourne GPO (1867). In September 2001, a fire destroyed the heritage-listed postal hall. Rebuilding was completed in September 2004 and, as it had been in those early days, the building continues to be a favourite meeting place for visitors to the city.

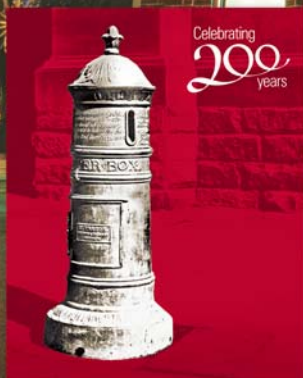
Australia's postal services continue
to bring Australian communities,
and the world, together.



1601184
prestige booklet



1601008
postal and numismatic
cover – 2009 Issue 2



1601126 stamp pack (product is a large size format)

Postcodes were introduced in 1967 and there was also world-wide interest in the new technically and mechanically advanced mail exchange building in Sydney when it opened for business the same year. On 1 July 1975, the PMG was split into the Australian Postal Commission (Australia Post) and the Australian Telecommunications Commission (Telecom Australia).

In 1989, the Australian Postal Commission became the Australian Postal Corporation, a government business enterprise, with a board of directors and a charter to operate commercially while meeting a number of community service obligations.

Since that time, the local post office has continued to be the hub of local communities while Australia Post has evolved to meet the changing needs of people and businesses throughout the country. Today, Australia Post's services touch the lives of millions of people everyday – from traditional letters and parcel services through to logistics, fulfilment, identity services and database management.

The variety of stamp designs issued today also allows for more choice, especially for social mail, and is part of a trend that began in the latter half of the twentieth century.

After 200 years, there is no doubt that Australia Post continues to be a part of everyday life in our nation – yesterday, today and tomorrow.

TECHNICAL DETAILS

Issue date	25 March 2009
FDI withdrawal date	22 April 2009
Denominations	10 x 55c (sheetlet of 10)
Stamp/product design	Lynette Traynor, Australia Post Design Studio
Printer	Energi Print
Paper (gummed)	Tullis Russell
(s/adhesive).....	B90/B100 s/a
Printing process	Lithography
Stamp size	26mm x 37.5mm
Sheetlet size	145mm x 90mm
Perforations	14.6 x 13.86
Sheet layout	10
Special feature	Simulated watermark
National postmark.....	Melbourne, Vic 3000

Celebrating
200 years

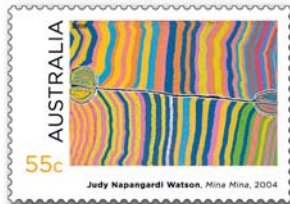


1601220 maxicard set (10)

INDIGENOUS CULTURE

1 APRIL 2009

55c..... *Mamu* (2008)
 55c..... *All the Jila* (2006)
 55c..... *Mina Mina* (2004)
 \$1.40..... *Untitled*
 (Mission series, 2006)
 \$2.05..... *Natjula* (2003)



This stamp issue features paintings by five living Indigenous artists – Judy Napangardi Watson, Tjuruparu Watson, Jan Billycan, Elaine Russell and Nura Rupert. These artists hail from locations across Australia – from central desert regions to urban Sydney – and together their works exemplify the vitality of Indigenous art across the country. They are selected from the rich collections of Indigenous art held in our major public collections – in this case the National Gallery of Australia, the Art Gallery of South Australia, and the National Gallery of Victoria.

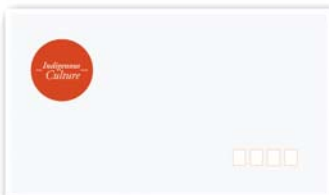
Non-traditional colours feature in this selection, from the shimmering bands of colour in Judy Napangardi Watson's painting to the harmony of contrasting hues in Jan Billycan's work. Synthetic colours have had a liberating effect on Indigenous art throughout Australia. Widely available since the 1980s, even in remote communities, such colours have been embraced by Indigenous artists, who have shown a readiness to transform and reinvent their ceremonial art as they bring it into the public domain.

Four of the paintings are by women artists. Their prominence has come after a long gestation period, particularly in the communities in remote central Australia, where women came to working on canvas after years of practising batik and other crafts. The fame of Emily Kame Kngwarreye, who began painting seriously when she was nearly 80, has also contributed to the confidence and visibility of art by Aboriginal women. Nura Rupert works at Ernabella, known as the first place where women in traditional communities were given an opportunity to make art of their own with modern materials.

The youngest artist of the five is 68 years old in 2009 – an inspiring contrast to the focus on youthful creativity in western culture. Their works show a variety of aesthetic approaches, but all depict stories about home, country and identity.



1602001 first day cover (gummed)



1602005 first day cover (blank)

Speaking of his painting, *Natjula*, Tjurupura Watson said, “This is the place where I grew up as a boy. There are a lot of rockholes here. From Natjula rockhole we travelled one way to Mantamaru, other way to Warakurna, other way to Ranges and other to Illura. I know this road, this country here. It is number one *ngura* (country).” Jan Billycan’s painting likewise depicts waterholes, in her part of the country named *jila*. She moved from desert country to the estuarine waters of Bidyadanga, 250 kilometres south of Broome, when the waterholes failed. Her paintings show the country she remembers, and tell the younger generation of their elder’s origins in the desert.

A fringed hair-string belt worn by ancestral women crosses Judy Napangardi Watson’s painting, *Mina Mina*, with rippling bands of colour that depict her ancestral homeland at Mina Mina – both the country itself and the Dreaming connected to this important women’s site.

Nura Rupert, from the Anangu Pitjantjatjara Yankunytjatjara, or APY lands in the far northwest of South Australia, is also a senior custodian of her family’s creation stories. Her paintings of Mamu – spooky spirits that are blamed for illnesses and strange disappearances – blur the lines between the real world and the spirit world, often having people, rabbits or dogs morphing into spirits.

Elaine Russell’s paintings, by contrast, depict the everyday activities of life at Murrin Bridge Mission on the Lachlan River in central New South Wales – from catching yabbies to bagging potatoes. Her bold, graphic paintings in a naïve style capture the regimented life of the mission, but also the duties and pleasures that sustained country life, such as setting possum traps in “*Untitled (from the Mission series)*”.

TECHNICAL DETAILS

Issue date	1 April 2009
FDI withdrawal date	29 April 2009
Denominations	3 x 55c, 1 x \$1.40, 1 x \$2.05
Stamp/product design	Sally Piskuric, Australia Post Design Studio
Printer	McKellar
Paper (gummed/s-a)	Tullis Russell/B100 s/a
Printing process	Lithography
Stamp size	37.5mm x 26mm
Perforations	14.6 x 13.86
Sheet layout	50 (55c x 3 se-tenant)
Special feature	Nil
National postmark	Uralla, NSW 2358



1602250 sheetlet (5 x \$1.40 international)
1602252 sheetlet (5 x \$2.05 international)



1602126 stamp pack



1602220 maxicard set (5)

55c.....The Queen riding at the head of the parade
 \$2.05...The Queen and Prince Philip view the parade from a carriage



QUEEN'S BIRTHDAY

15 APRIL 2009

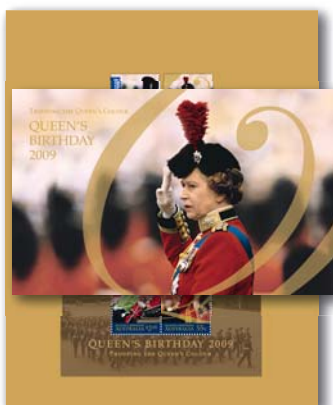
The Queen's birthday stamp issue for 2009 features the Trooping of the Colour parade, which marks the Queen's official birthday each year. The ceremony has marked the sovereign's official birthday since 1748 and the stamps in this year's issue show how the Queen has participated in the parade during her reign; from riding at the head of the parade in regimental uniform to riding in a carriage. Prince Philip accompanies the Queen at this event and is shown with her on the stamp.

The miniature sheet features the annual Trooping of the Queen's Colour in Australia held at the Royal Military College of Australia, Duntroon in Canberra. The parade is usually reviewed by the Governor-General. The Queen's Colour was trooped in Australia for the first time at Duntroon on the Queen's Birthday Parade in 1956, a practice which has continued since then.



1603142 minisheet

1603184 prestige booklet



1603126 stamp pack



1603002 first day cover (gummed)

TECHNICAL DETAILS

Issue date	15 April 2009
FDI withdrawal date.....	13 May 2009
Denominations	1 x 55c, 1 x \$2.05
Stamp/product design ..	Alexandra Hall, Australia Post Design Studio
Printer	Energi
Paper (gummed)	Tullis Russell
Printing process	Lithography
Stamp size	26mm x 37.5mm
Minisheet size.....	106mm x 70mm
Perforations.....	14.6 x 13.86
Sheet layout	50
Special feature	Nil
National postmark	Windsor, NSW 2756

COCOS (KEELING) ISLANDS: 400 YEARS

21 APRIL 2009

In 2009 we celebrate the 400th anniversary of the first European sighting of the Cocos (Keeling) Islands in 1609.

The first stamp in the issue commemorates the sighting of the islands by Captain William Keeling of the English East India Company. The islands were previously known as the Cocos Islands (because of the profusion of coconut palms growing there), but by the early 18th century they were known as Keeling Islands or Cocos-Keeling Islands. The first stamp shows an early 17th-century English East India ship similar to one used by Keeling.

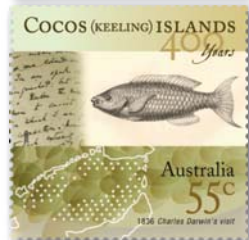
Charles Darwin visited the islands on *The Beagle* in its second survey voyage, arriving on 1 April 1836. He studied the atolls and the natural history of the islands, collecting specimens and commenting on the “immense number” of seabirds present on the main atoll. The second stamp features a detail from Darwin’s notebooks and a sketch of a fish he found. 2009 is the 200th anniversary of Charles Darwin’s birth.

The islands of the southern atoll were first settled in the early nineteenth century. In 1827 John Clunies Ross, a Scottish trader and sea captain, settled on Home Island with his family. The islands were controlled by the Clunies Ross family for more than 150 years. The islands became an external territory of Australia in 1955.

TECHNICAL DETAILS

Issue date	21 April 2009
FDI withdrawal date.....	19 May 2009
Denominations	2 x 55c (se-tenant), 1 x \$1.10 & \$1.65
Stamp design.....	Stacey Zass
Product design.....	Sharon Rodziewicz, Australia Post Design Studio
Printer	Energi Print
Paper (gummed)	Tullis Russell
Printing process	Lithography
Stamp size	35mm x 35mm
Perforations.....	14.28 x 14.28
Sheet layout	50 (checkerboard)
Special feature	Nil
National postmark	Cocos (Keeling) Islands, WA 6799

55c..... Sighting of the islands
55c..... Sketch by Darwin
\$1.10..... Coconut labourer
\$1.65..... Dugong & map



1604002 first day cover (gummed)

TALKING STAMPS

WITH RICHARD BRECKON

Nineteenth century Australian stamps are characteristically “ordinary” in appearance. They were not intended to appeal to collectors’ instincts nor were the designs changed regularly to avoid public boredom. Stamps served to prepay postage and any elaborate elements in their designs was to thwart potential forgeries.

Australian Colonial stamps featured a profile portrait of Queen Victoria, a tradition beginning with Great Britain’s first stamp, the Penny Black of 1840. It is interesting to note that the majority of stamp portraits of the Queen depict her as a young woman at the outset of her reign; by the end of a 64-year reign the Queen’s profile remained unchanged on most Australian stamps.



There were variations in the royal portrait. Victoria’s first stamps of 1850 (the ‘Half-lengths’) featured a half-length portrait of the Queen. In 1875, Victoria updated the royal portrait on its 1d stamp, a common usage denomination. New South Wales also adopted a contemporary portrait on 2d and 2½d stamps issued in 1897. However, both colonies continued to feature youthful portraits on other stamp values.

Some colonial stamps featured subjects other than royal portraits. The distinctive colony in this regard was Western Australia, the stamps of which only featured the Black Swan up to Federation. New South Wales also omitted the Queen’s head on its first stamps in 1850 – the Sydney View stamps featured the colony’s seal of 1792 depicting an allegorical female (Industry) directing the attention of newly-arrived convicts to oxen ploughing.

A significant departure from tradition involved the 1888–89 100 Years stamps of New South Wales. Ranging in values from 1d to £1, they were issued to mark the centenary of European settlement. This was the first time in the world a government postal administration issued commemorative stamps. Another break with stamp design tradition involved Tasmania’s 1899–1900 six large-size stamps featuring scenic views. The pictorial series was intended to promote tourism in Tasmania, illustrating how governments had become aware of the promotional opportunities offered by stamps.

Australian colonial stamps were either printed in England or locally. In some instances, local stamp production was a temporary measure until English-printed stamps were supplied. New South Wales and Tasmania contracted private printers to produce their first stamp issues. The printing plates were engraved by hand with each stamp image on the plate differing somewhat in detail. Queensland, South Australia and Western Australia

had their first stamps printed in London by Perkins, Bacon Ltd., who also printed stamps for Great Britain.



New South Wales and Tasmania eventually replaced locally-printed stamps with Perkins Bacon issues. In the eyes of the colonial authorities, Perkins Bacon stamps offered greater protection against forgery than the more crude locally-produced stamps. Usually, the colonies ordered an initial supply of stamps to be shipped from London, along with the printing plates and a supply of blank watermarked paper, so that further stamp supplies could be printed locally. The “tyranny of distance” made it impracticable to rely on the English printers to supply stamps on an ongoing basis.



After 1860, De La Rue replaced Perkins Bacon as the principal stamp printer for Great Britain and the British colonies. De La Rue were specialists in letterpress stamp printing,

which differed to Perkins Bacon's intaglio (or recess) process in that the stamp image was raised above the surface of the printing plate, giving stamps a characteristically flat appearance. Since letterpress printing was significantly cheaper than intaglio, the Australian colonies began printing the bulk of their stamps using plates made by De La Rue.

Victoria was distinctive with its stamp printing arrangements in that, with the exception of two stamp issues, Victorian stamps were wholly produced in the colony (ie the engraving of the master die, the manufacture of the plates and the stamp printing were carried out in Melbourne). Until around 1860, stamps were issued imperforate and scissors were used to separate stamps

from the sheet. After 1860 the use of perforation in stamp production became standard. As a security requirement, stamp paper incorporated a watermark device. This was originally a numeral corresponding to the stamp's denomination; for example, "1" for 1d, "2" for 2d. At a later stage, an outline of a crown together with the colony's initials formed the watermark. Shortly after Federation, the design of a Crown and A (for Australia) was adopted.



Colonial stamps, normally printed in one colour, were occasionally produced in two-colour if it was necessary to make certain stamps look more distinctive, such as high-denomination stamps versus low value stamps.

In the mid-1850s, Victoria issued two-colour stamps for Registered mail and for Late Fee mail. For many collectors it is the errors and varieties involved in stamp printing that are the more desirable items. The most valuable Australian stamp is the "Inverted Frame" 4d blue Western Australian issue of 1854. As a result of a transfer error in laying down the lithographic stone, the framework of one stamp image was inverted in relation to the Black Swan. Only about 14 examples of this error have been discovered by collectors.

POST MASTER GALLERY

WWW.AUSPOST.COM.AU/GALLERY

Stamps of Australia 2005–2008 (November 2008 to June 2009)

Australia is a young and multicultural nation with a strong culture and identity. It is distant from major world centres and consequently less influenced by world trends. Australian stamps and philatelic products reflect this in both subject matter and innovative approaches to new products and marketing, while still showcasing Australia's unique culture, landscape, flora and fauna.

The diversity of stamps and products in this exhibit are as fresh and unique as the country itself and include domestic and international stamps, instant stamps issued for major events, stamps of living Australian legends, personal stamps, Australian territories stamps and others.

Here Comes the Postie – 200 Years of Postal Services in Australia

This exhibition will not be shown in the Post Master Gallery but will form part of an exhibit at the Melbourne Stamp Show from 23 to 26 July 2009 at the National Tennis Centre. The exhibit will include gems from the National Philatelic Collection and the Chapman Collection.

**321 EXHIBITION STREET
MELBOURNE VIC 3000**

Enquiries (03) 9204 5021
postmastergallery@auspost.com.au

**ADMISSION IS FREE
GALLERY HOURS**

Monday to Friday
10am to 5pm



**STAMPS OF
AUSTRALIA
2005 – 2008**

**On exhibition
until June 2009**

Frame your souvenir sheets!
It's a great way to brighten
a child's room.



TM & © Warner Bros. Entertainment



1514376
AFL Premiers 2008
souvenir stamp sheet with
10 x 55c Globe stamps

AUD15.95

The frame shown
is not included with
the price of souvenir
sheets and is for display
purposes only.



© Disney



© Disney



TM & © DC Comics

Souvenir stamp sheets \$15.95 each

- 1113879 Looney Tunes
- 1514362 Barbie Mariposa
- 1514365 Marvel Heroes
- 1514439 Batman - The Dark Knight

Souvenir stamp packs \$10.95 each

- 1514366
Disney Fairies
- 1514367
Mickey Mouse 80 Years of Fun

Personalised Stamps™

Some moments are precious, and you'll want to share them with family and friends.

Our easy online service lets you create a lasting memory.



www.auspost.com.au/pstamps

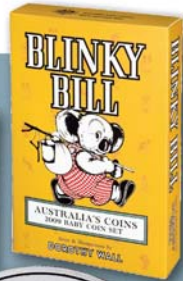


Australian Government Royal Australian Mint



A delightful keepsake of this very special occasion.

1514425
2009 Wedding Set
Gem–Uncirculated
AUD95.00 each



medallion
detail
shown



Great Australian 2009 birth or birthday memento!

1514426
Blinky Bill Baby Proof Set
AUD120.00 each

1514430
International Year of Astronomy
2009 Six Coin Uncirculated Year Set
AUD30.00 each



1514428
International Year of Astronomy
2009 Six Coin Proof Year Set
AUD115.00 each



1514460
2009 60 Years of Australian
Citizenship fine Silver proof
coin
AUD45.00 each





1514461
2009 Australian Koala
1oz Silver Gilded Edition
(24-carat gold gilding)
AUD75.00 each

1514462
2009 Orbit and Beyond Series First Space Walk
1oz Silver coin
AUD97.50 each

LNy Year Display Sets

Each set features a silver ingot replicating the LNy stamp artwork in relief of that year. Each of the sets also include the relevant minisheet and certificate of authenticity encased in a beautiful wooden box.

0306295	LNy Year of the Rat	AUD250.00
1594350	LNy Year of the Ox	AUD250.00



2009 Baby Coin Card

What a delightful gift to celebrate a new baby. The baby coin card includes a 2009 \$1 Uncirculated bounding kangaroo coin from the Royal Australian Mint.

You can also personalise the card for a lasting memento of baby's first year.

1514454 \$12.95 each



STAMP SHOWS AND POSTMARKS

ANDERSON INLET STAMP & COIN FAIR (Vic)

7 March 2009

To be held at the Uniting Church Hall, William St, Inverloch. Dealers to attend with parking available. Gold coin admission and a lucky door prize. For more information contact 03 5674 5579 or 03 5674 3382.

SUNSHINE COAST STAMP FAIR (Qld)

15 March 2009

To be held at the Sunshine Coast Square Dance Centre, 260 Dixon Rd, Buderim from 9am to 4pm. Four dealers and 16 clubs will attend and admission is FREE. Please contact 07 5448 6565 for information.

APTA STAMP & COIN SHOW (Tas)

21 to 22 March 2009

This event will be held at Sandors on the Park, 3 Brisbane St, Launceston on 21 March and at Mercure Hotel, 156 Bathurst St, Hobart on 22 March. Hours are 9am to 3pm and admission is \$5 (children admitted FREE). For enquiries please telephone 03 9878 4664 or refer to the website for full details.

www.apta.com.au

WEST SYDNEY STAMP & COIN SHOW (NSW)

28 March 2009

This event will be held at Parramatta RSL, cnr Macquarie and O'Connell Sts from 10am to 3.30pm. Admission is \$2 and FREE valuations will be available. Local and interstate dealers will attend. Contact Steve on 0432 540 760.

EXPO 2009 (NSW)

18 and 19 April 2009

To be hosted by the Orange Coin and Stamp Club Inc. at the Kenna Hall, Hill St, Orange, NSW. Fairs are held the first Saturday of each month in Quinn's Arcade,

Summer St from 9am to 4pm. Meetings are held on the last Tuesday of the month at the Orange Community Information Centre, Kite St, at 7.30pm.

ROYAL PHILATELIC SOCIETY (Vic) ANNUAL BOURSE & OPEN DAY

18 April 2009

This event will take place at Purves House, 303 High St, Ashburton, from 10am to 4pm. A number of stamp dealers will be in attendance and an uncatalogued auction will be held at midday. Admission is FREE.

POSTMARKS

FIRST DAY OF ISSUE POSTMARKS

Australian Legends 2009

22 January 2009
Melbourne, Vic 3000

AAT: Poles and Glaciers

4 March 2009
Kingston, Tas 7050

Earth Hour

11 March 2009
Darkan, WA 6392

Australia Post – 200 Years

25 March 2009
Melbourne, Vic 3000

Indigenous Culture

1 April 2009
Uralla, NSW 2358

Queen's Birthday

15 April 2009
Windsor, NSW 2756

Cocos (Keeling) Islands: 400 Years

21 April 2009
Cocos (Keeling) Islands, WA 6799

KOALA COUNT

The Koala symbol printed in the selvage adjacent to stamps and down either side of a sheet indicates a reprint. A kangaroo indicates the fifth reprint.

Nature of Australia –Rainforest Butterflies

Blue-banded eggfly (10c)
0467067



Waterfalls Australia

Russell Falls (\$1.40)
0468067



Jim Jim Falls (\$2.05)

0469067



Spa Pool, Ham. Gorge (\$2.80)

0470067



MacKenzie Falls (\$4.10)

0471067



Tourist Precincts

Salamanca Place (\$1.65)
0472067



Australian Wildlife (1994)

Crocodile (30c)
0473067



Australian Wildlife (1992)

Echidna (35c)
0474067



Nature of Australia (Wetlands)

Saltwater Crocodile (20c)
0476067



4 March 2009

AAT: Poles and Glaciers

Supplement design set (gummed), minisheet
Optional nil

11 March 2009

Earth Hour

Supplement design set (gummed), design set
s-adhesive (complete booklet), gutter pair
Optional s-adhesive (complete booklet)

25 March 2009

Australia Post – 200 Years

Supplement design set (gummed full sheetlet),
design set (s-adhesive strip of 10)
Optional sheetlet of 10 (gummed), s-adhesive booklet
of 10, strip of 10 from a roll, collector pack

1 April 2009

Indigenous Culture

Supplement design set (gummed) & s-adhesive
singles x two (complete sheetlets)
Optional s-adhesive sheetlets x two

15 April 2009

Queen's Birthday

Supplement design set (gummed), minisheet
Optional nil

21 April 2009

Cocos (Keeling) Islands: 400 Years

Supplement design set (gummed), gutter pair
Optional nil

Mail order codes

1603235	Australian Supplement	\$53.80
1603236	Australian Optional	\$55.55
1603237	Cocos (Keeling) Islands Supplement	\$4.95
1603239	AAT Supplement	\$5.20

In the case of self-adhesive stamps, Australia Post will supply collector packs, full booklets or sheetlets only.

NEW ISSUES

Mail order (Retail)	Product Description	Price	Planned Withdrawal Date
4 March 2009	AAT: Poles and Glaciers		
1599067	Stamps (1 x 55c, 1 x \$2.05)	\$2.60	30 March 2010
1599142 (36531)	Minisheet	\$2.60	30 March 2010
1599002 (36534)	First day cover (gummed)	\$2.90	1 April 2009
1599013 (36568)	First day cover (minisheet)	\$2.90	1 April 2009
1599005 (36533)	First day cover (blank)	\$0.30	30 March 2010
1599126 (36535)	Stamp pack	\$5.65	30 March 2010
1599220 (36536)	Maxicard set (2)	\$4.10	30 March 2010
1599241 (36526)	Gutter (10 x 55c – no design)	\$5.50	30 March 2010
1599242 (36530)	Gutter (10 x \$2.05)	\$20.50	30 March 2010
11 March 2009	Earth Hour		
1609067	Stamps (2 x 55c, 1 x \$2.05)	\$3.15	30 September 2009
1609002 (36613)	First day cover (gummed)	\$3.45	8 April 2009
1609005 (36612)	First day cover (blank)	\$0.30	30 September 2009
1609300 (36617)	Prestige first day cover	\$9.95	To be advised
1609182 (36601)	s-a booklet MIXED (20 x 55c)	\$11.00	30 September 2009
1609250	Chequebook MIXED (20 x 20 x 55c)	\$220.00	30 September 2009
1609126 (36614)	Stamp pack	\$3.60	30 September 2009
1609220 (36615)	Maxicard set (3)	\$5.40	30 September 2009
1609350 (36616)	Stamp and medallion cover (Limited edition of 10,000)	\$29.95	30 September 2009
1609241 (36606)	Gutter (10 x 55c – no design)	\$5.50	30 September 2009
1609242 (36610)	Gutter (10 x \$2.05)	\$20.50	30 September 2009

NEW ISSUES

Mail order (Retail)	Product Description	Price	Planned Withdrawal Date
25 March 2009	Australia Post – 200 Years		
1601067	Stamps (10 x 55c)	\$5.50	31 December 2009
1601122 (36539)	Sheetlet (10 x 55c)	\$5.50	31 December 2009
1601002 (36543)	First day cover (gummed)	\$5.80	22 April 2009
1601003 (36726)	First day cover (s-a)	\$5.80	22 April 2009
1601005 (36542)	First day cover (blank)	\$0.30	31 December 2009
1601126 (36544)	Stamp pack	\$5.95	31 December 2009
1601220 (36545)	Maxicard set (10)	\$13.00	31 December 2009
1601008 (36729)	Stamp and coin cover – 2009 Issue no. 2	\$14.95	31 December 2009
1601184 (36730)	Prestige booklet	\$19.95	31 December 2009
1601182 (36539)	S-a booklet (10 x 55c)	\$5.50	31 December 2009
1601250	Chequebook (20 x 10 x 55c)	\$110.00	31 December 2009
1601209 (36538)	Roll (100 x 55c)	\$55.00	31 December 2009
1601200 (36727)	Strip of s-adhesive (10 x 55c)	\$5.50	31 December 2009
1601223 (36728)	Collector pack	\$10.80	31 December 2009
1 April 2009	Indigenous Culture		
1602067	Stamps (3 x 55c, 1 x \$1.40, 1 x \$2.05)	\$5.10	30 September 2009
1602250 (36621)	Sheetlet (5 x \$1.40)	\$7.00	30 September 2009
1602251	Chequebook (20 x 5 x \$1.40)	\$140.00	30 September 2009
1602252 (36622)	Sheetlet (5 x \$2.05)	\$10.25	30 September 2009
1602253	Chequebook (20 x 5 x \$2.05)	\$205.00	30 September 2009
1602001 (36639)	First day cover (gummed)	\$5.40	29 April 2009
1602005 (36638)	First day cover (blank)	\$0.30	30 September 2009
1602126 (36640)	Stamp pack	\$5.55	30 September 2009
1602220 (36641)	Maxicard set (5)	\$8.85	30 September 2009
1602241 (36629)	Gutter (10 x 55c – no design)	\$5.50	30 September 2009
1602242 (36633)	Gutter (10 x \$1.40)	\$14.00	30 September 2009
15 April 2009	Queen's Birthday		
1603067	Stamps (1 x 55c, 1 x \$2.05)	\$2.60	31 October 2009
1603142 (36676)	Minisheet	\$2.60	31 October 2009
1603002 (36679)	First day cover (gummed)	\$2.90	13 May 2009
1603013 (36680)	First day cover (minisheet)	\$2.90	13 May 2009
1603005 (36678)	First day cover (blank)	\$0.30	31 October 2009
1603126 (36681)	Stamp pack	\$5.65	31 October 2009
1603220 (36682)	Maxicard set (2)	\$4.10	31 October 2009
1603184 (36683)	Prestige booklet	\$10.95	31 October 2009
1603241 (36671)	Gutter (10 x 55c – no design)	\$5.50	31 October 2009
1603242 (36675)	Gutter (10 \$2.05)	\$20.50	31 October 2009
21 April 2009	Cocos (Keeling) Islands – 400 Years		
1604067	Stamps (2 x 55c, 1 x \$1.10, 1 x \$1.65)	\$3.85	31 October 2009
1604001 (36785)	First day cover (gummed)	\$4.15	19 May 2009
1604005 (36784)	First day cover (blank)	\$0.30	31 October 2009
1604241 (36775)	Gutter (10 x 55c – no design)	\$5.50	31 October 2009
1604242 (36779)	Gutter (10 x \$1.10)	\$11.00	31 October 2009
1604243 (36783)	Gutter (10 x \$1.65)	\$16.50	31 October 2009

NEW ISSUES

Mail order (Retail)	Product Description	Price	Planned Withdrawal Date
2 March 2009	For Every Occasion s-adhesive booklets		
0476251 (36716)	Wedding booklet (gold rings 10 x 55c)	\$5.50	To be advised
0476252 (36717)	Baby (10 x 55c)	\$5.50	To be advised
0476253 (36718)	Party (balloons 10 x 55c)	\$5.50	To be advised
0476254 (36719)	Celebrate (sparklers 10 x 55c)	\$5.50	To be advised
0476255 (36720)	Wedding (10 x \$1.10)	\$11.00	To be advised



March 2009	AFL & NRL souvenir stamp packs	\$15.95 each	Withdrawal date to be advised
AFL Teams		NRL Teams	
1598301 (36476)	Adelaide	1614301 (36686)	Brisbane Broncos
1598302 (36477)	Brisbane Lions	1614302 (36695)	Canberra Raiders
1598303 (36478)	Carlton	1614303 (36687)	Canterbury Bulldogs
1598304 (36479)	Collingwood	1614304 (36698)	Cronulla Sharks
1598305 (36480)	Essendon	1614305 (36697)	Manly-Warringah Sea Eagles
1598306 (36481)	Fremantle	1614306 (36692)	Melbourne Storm
1598307 (36482)	Geelong	1614307 (36691)	Newcastle Knights
1598308 (36483)	Hawthorn	1614308 (36690)	Parramatta Eels
1598309 (36484)	Melbourne	1614309 (36693)	Penrith Panthers
1598310 (36485)	North Melbourne	1614310 (36689)	St George-Illawarra
1598311 (36486)	Port Adelaide	1614311 (36694)	South Sydney Rabbitohs
1598312 (36487)	Richmond	1614312 (36696)	Sydney Roosters
1598313 (36488)	St Kilda	1614313 (36688)	North Queensland Cowboys
1598314 (36489)	Sydney Swans	1614314 (36699)	West Tigers
1598315 (36490)	West Coast Eagles	1614315 (36701)	New Zealand Warriors
1598316 (36491)	Western Bulldogs	1614316 (36700)	Gold Coast Titans

Planned withdrawal dates may be changed without notice to meet emergent postal requirements. Advice of such changes will be published in the first available Stamp Bulletin Australia in retrospect. All prices are GST inclusive and are recommended. Contact the Australian Philatelic Bureau (FREECALL 1800 331 794 within Australia, +61 3 9887 0033 overseas) for the current price at the time you place your order.

2008 COLLECTIONS

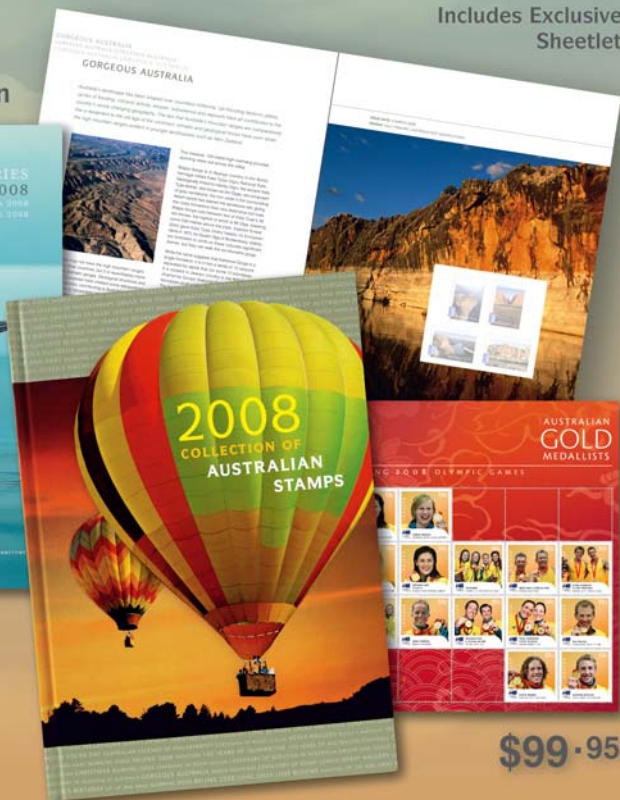
2008 Collection of Australian Stamps

Includes Exclusive Sheetlet

2008 Australian Territories Collection



\$24.95



\$99.95

Available now at participating Australia Post outlets or via mail order on 1800 331 794 while stocks last.

Refer to our website for more information about the latest stamp issues and related products from Australia Post.

www.auspost.com.au/stamps