

Stamp*Bulletin*

NO. 298 >> MAY – JUNE 2009



AUSTRALIA

AUSTRALIA POST

Celebrating

200 years

**THE SEARCH FOR
AUSTRALIA'S
FAVOURITE STAMPS**

>> Not Just Desserts

>> WWF: Dolphins of the
Australian Coastline

>> Queensland: 150 Years



© Copyright 2009 Australian Postal Corporation. All rights reserved. Australia Post stamp designs and philatelic products are subject to copyright and may not be reproduced without permission. All applications for the reproduction of Australian stamps should be made in writing to:

Group Manager
Philatelic Group – Australia Post
GPO Box 1777
Melbourne VIC. 3001
Fax: 03 9204 7744
ABN: 28 864 970 579

Stamp Bulletin Australia is produced by Australia Post's Philatelic Group. To the best of Australia Post's knowledge, all information contained in this *Bulletin* was correct at the time of printing. Australia Post will not accept any responsibility for errors, oversights or changes to information which may occur after printing.

The availability of products advertised in this *Bulletin* is subject to demand, availability of stock or as otherwise notified from time to time. For availability of products, visit our website at:
www.auspost.com.au/stamps

Where non-Australia Post products or businesses are advertised, Australia Post does not represent any association with the business advertised or the supply of goods or services by those businesses.

Dear Collectors

Welcome to another *Stamp Bulletin*, featuring a range of new stamp issues for 2009. At the time of writing this column, Australia is over the worst of the bushfire season. But the recent tragedy of the Victorian bushfires continues to touch us all, and our sincere thoughts are with all those affected.

In this *Stamp Bulletin* we include the second issue of stamps celebrating 200 years of postal services in Australia. For this issue, Australia's Favourite Stamps, we asked people to vote for their preferred stamp from a selection of stamp designs going back to the first postage stamps issued in Australia (1850). The results will be published in late June and can be checked on our website.

Our first stamp issue in May, Not Just Desserts, celebrates four Australian treats that we've all probably sampled, and perhaps continue to appreciate. These classic dishes remain as popular today as they were when first placed on Australian tables. Who can resist the aroma of fresh baked Anzac biscuits or the luxury of a pavlova? The prestige booklet is full of delightful images, classic recipes and the story behind each dessert featured.

This edition also brings you a WWF–World Wide Fund for Nature stamp issue that focuses on some spectacular dolphin species found in Australian waters. It links to the very popular Whales Down Under issue from 2006. One of the four species is also found in the waters of Antarctica.

We celebrate a milestone in Australian history with Queensland: 150 Years. The stamps in this issue reflect the contributions of city, outback and regional communities in building the state of Queensland.

Readers who participated in our stamp poll survey at the end of 2008 will find a summary of the outcomes on our website. Conducted by the Sweeney Research Group on behalf of Australia Post's Philatelic Group, the survey gave us a valuable insight into the way our customers view our products and services, including the *Stamp Bulletin*. This survey will be conducted annually as part of the Stamp Design Award, 'People's Choice', which invites you to vote for your favourite stamp issue of the year.

Until next time,

A stylized, handwritten signature in dark ink, appearing to read 'NL' or 'Noel'.

Noel Leahy, Manager, Philatelic Group

CONTENTS

4	Not Just Desserts
6.....	WWF: Dolphins of the Australian Coastline
8.....	150th Anniversary of Queensland
10.....	Australia Post – 200 Years: Australia's Favourite Stamps
14.....	Talking Stamps
15.....	Special Collectables
17.....	Coins
20.....	Stamp shows and events
21.....	Postmarks
22.....	Seven Seas

POST MASTER GALLERY

GALLERY HOURS

10AM TO 5PM MONDAY TO FRIDAY
FREE ADMISSION



321 EXHIBITION STREET, MELBOURNE, VIC

Stamps of Australia 2005–2008 (closes June 2009)

Australia is a young and multicultural nation with a strong culture and identity. Australian stamps and philatelic products reflect this in both subject matter and innovative approaches to new products and marketing, while still showcasing Australia's unique culture, landscape, flora and fauna.

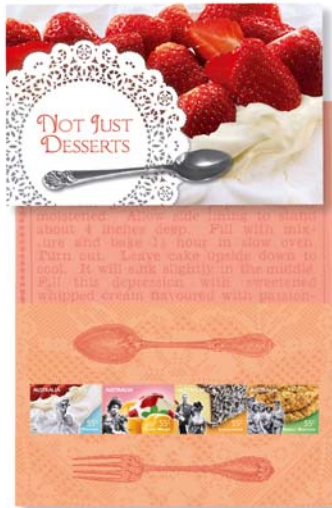
Here Comes the Postie 200 Years of Postal Services in Australia

This exhibition will not be shown in the Post Master Gallery, but will form an exhibit at the Melbourne Stampshow 09 from 23 to 26 July 2009 at the Melbourne Park Function Centre. The exhibit will include gems from the National Philatelic Collection and the Chapman Collection.

NOT JUST DESSERTS

15 MAY 2009

55c... Pavlova
55c... Peach Melba
55c... Lamingtons
55c... Anzac Biscuits



1600126 stamp pack



1600002 first day cover (gummed)

This issue focuses on four of the country's iconic dishes. Although each has a fascinating social history, much of this culinary history is steeped in myth, including when and where the dishes were created.

Since the pavlova's creation in the early 20th century, debate has raged as to its exact origins – was this large, soft-centred meringue, topped with whipped cream and fruit, first made in New Zealand or Australia? What has never been disputed is its inspiration, the Russian prima ballerina Anna Pavlova. The first verifiable pavlova made in Australia was created in 1935 at the Esplanade Hotel in Perth, by the head chef, Herbert Sasche. Inspired by the great ballerina in her solo dance *The Dying Swan*, a role for which she was revered worldwide, Sasche placed whipped cream and fruit on top of meringue. Its whiteness and ethereal quality made it a fitting tribute to the ballerina.

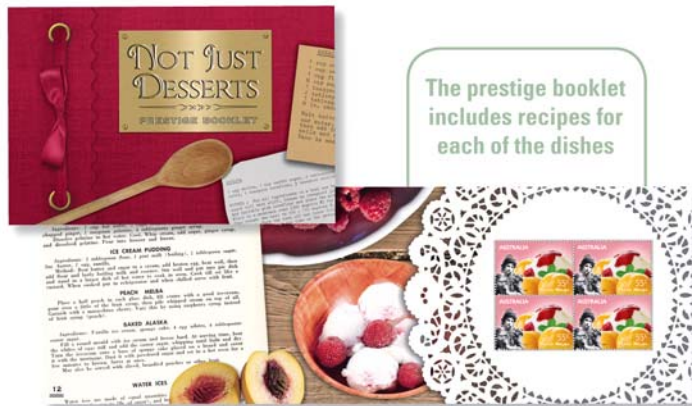
As Australia's first world-renowned opera singer, Dame Nellie Melba (1859–1931) gave her name to several dishes including Melba toast and the dessert Peach Melba, a combination of poached peaches and raspberry sauce served with vanilla ice cream. In 1892, Melba was living at the Savoy Hotel in London. Auguste Escoffier, the head chef at the hotel, heard her sing at Covent Garden and created the dessert in her honour. Escoffier served the Peach Melba at a dinner Dame Nellie was hosting, and presented it in an ice sculpture of a swan inspired by her performance in *Lohengrin*, one of Wagner's romantic operas.

The lamington – a square piece of sponge cake dipped in chocolate and then coated in desiccated coconut – is a truly authentic Australian creation. Lamingtons are thought to have been named after Charles Cochrane-Baillie, 2nd Baron Lamington (who served as governor of Queensland from 1896 to 1901) or after his wife, Lady Lamington. As to its inspiration, tradition has it that it was invented when unexpected guests arrived for afternoon tea at government house and something had to be done to resurrect a stale sponge cake. This most unlikely of offerings was a great hit and the recipe was passed on – using fresh sponge instead.



There are as many recipes for Anzac biscuits as there are stories about its origins. And, along with the pavlova, its creation myth is claimed by New Zealand as well as Australia. The first known recipe that combines the words "Anzac Biscuits" with the actual ingredients used today appeared in a New Zealand cookbook in 1921. What is not disputed is the fact that these biscuits were named after the ANZAC soldiers who fought alongside each other at Gallipoli in 1915. The most common story about its origin is that the biscuits were made by antipodean women looking for food that would remain edible for prolonged periods to send to their troops fighting overseas.

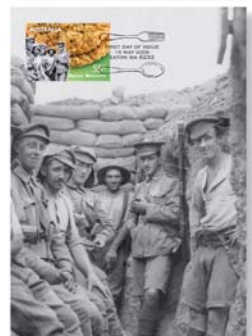
Whatever their origins, these dishes remain popular with Australians both here and abroad and signal the way in which food is shaped by history.



1600184 prestige booklet

TECHNICAL DETAILS

Issue date	15 May 2009
FDI withdrawal date	12 June 2009
Denominations	4 x 55c
Stamp design	Hoyne Design
Product design	Simone Sakinofsky, Australia Post Design Studio
Printer	McKellar Renown
Paper (gummed)	Tullis Russell
Printing process	Lithography
Stamp size	37.5mm x 26mm
Perforations	13.86 x 14.6
Sheet layout	50
Special feature	Decorative gutter
National postmark	Eaton, WA 6232



1600220 maxicards (4)

WWF: DOLPHINS OF THE AUSTRALIAN COASTLINE

26 MAY 2009

- 55c.....Spotted Bottlenose
Dolphin (*Tursiops aduncus*)
\$1.35...Hourglass Dolphin
(*Lagenorhynchus cruciger*)
\$1.40...Southern Right Whale
Dolphin (*Lissodelphis peronii*)
\$2.05...Dusky Dolphin
(*Lagenorhynchus obscurus*)



1607142 minisheet

This stamp issue, which is part of the WWF–World Wide Fund for Nature Conservation Stamp Collection, features four of the 14 species of dolphin that have been sighted in Australian waters.

55c Spotted Bottlenose Dolphin (*Tursiops aduncus*)

This dolphin is characterised by dark spots or flecks on the underside of the body. In Australia this species is found in warm shallow waters from Perth to Port Macquarie, including the well-known tourist site of Monkey Mia in Shark Bay, Western Australia.

\$1.35 Hourglass Dolphin (*Lagenorhynchus cruciger*)

The striking Hourglass Dolphin is distinctively marked with large white hourglass-shaped patches on its sides. Vigorous and energetic, it enjoys surfing large waves. The only true polar species in the Southern Hemisphere, it has been seen in Antarctic waters and off subantarctic Heard and Macquarie Islands.

\$1.40 Southern Right Whale Dolphin (*Lissodelphis peronii*)

The streamlined Southern Right Whale Dolphin is the only dolphin in Australasian waters that lacks a dorsal fin. It has a black back and white undersides, and has been seen in the deep, cold waters off Tasmania and the Great Australian Bight.

\$2.05 Dusky Dolphin (*Lagenorhynchus obscurus*)

The Dusky Dolphin is comparatively short and stocky, with a dark back, white belly and throat and grey sides. Known for displays of aerial acrobatics, groups of these entertaining dolphins often follow boats. In Australia this species has been sighted off Tasmania and Kangaroo Island, South Australia.

1607013 first day cover (minisheet)

The WWF Conservation Stamp Collection is the world's largest thematic stamp collection. Over 165 countries have participated and up to 16 stamp sets are issued each year. Most species depicted are at risk of extinction in the country of issue and in other cases it is the animal's habitat that is endangered.

The most recent Australia Post WWF stamp issue was the Australian Antarctic Territory (AAT) Royal Penguins in 2007.

WWF PANDA device © 1986 WWF with the authorisation of WWF, registered Trademark owner.



1607350 stamp and medallion cover



1607002 first day cover (gummed)



1607126 stamp pack

TECHNICAL DETAILS

Issue date	26 May 2009
FDI withdrawal date	23 June 2009
Denominations	55c, \$1.35, \$1.40, \$2.05
Stamp design	Ego Guiotto
Typography/Product	Alexandra Hall, Australia Post Design Studio
Stamp & Medallion cover..	Joanna McAlpine, Australia Post Design Studio
Printer	McKellar Renown
Paper	Tullis Russell/B100 s/a
Printing process	Lithography
Stamp size	37.5mm x 26mm
Minisheet size	136mm x 70mm
Perforations	13.86 x 14.6
Sheet layout	50
National postmark	Sorrento, Vic 3943



1607220 maxicard set (4)

55c.....Culture
\$2.75...Nature

QUEENSLAND – 150 YEARS

9 JUNE 2009



This year Queensland celebrates its 150th anniversary. The state's beginnings date to 6 June 1859, when Queen Victoria signed the Letters Patent establishing the new colony of Queensland, the same day an Order-in-Council established representative government. On 10 December 1859, the first governor, Sir George Ferguson Bowen, officially proclaimed Queensland a separate colony from New South Wales.

To mark the 150th anniversary of Queensland, Australia Post is issuing two stamps. The stamps celebrate Queensland's history and achievements, and the diversity of its regions and its natural beauty.

55c Culture

This stamp design features the Queensland Parliament House, located in the state capital of Brisbane. Although representative government had been established on the day Queensland was proclaimed in 1859, Parliament did not sit in the present Parliament House until August 1868.

Rural Queensland has helped shape the identity of the state, and this is represented by a windmill in the stamp design. This technological innovation is symbolic of rural life and industry, and it reminds us of pioneers such as Toowoomba's Griffiths brothers, whose company was behind the famous "Southern Cross" windmill. The title on the transcription of



1606002 first day cover (gummed)



1606013 first day cover (minisheet)



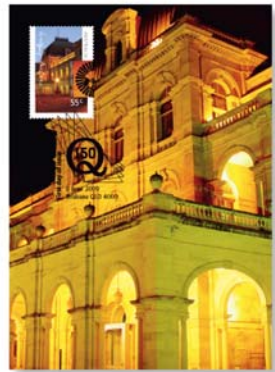
1602142 minisheet

Christina Macpherson's iconic "Waltzing Matilda" also represents rural Queensland. Banjo Patterson and Christina Macpherson composed "Waltzing Matilda" while staying at Dagworth Station, near Winton, Queensland, in 1895. Outback Queensland is represented in the red, furrowed sands at the base of the design.

\$2.75 Nature

The Great Barrier Reef is the world's largest natural reef and among the first World Heritage sites listed in Australia. So this significant part of our natural heritage has earned its place on the \$2.75 stamp. The reef draws tourists from all over the world and is a favourite destination for Australian holiday-makers, so it's of great importance to the Queensland economy.

The stamp design also features the Red-eyed Tree Frog (*Litoria chloris*), a species of tree frog native to eastern Australia. Its range extends as far as Proserpine, in mid-northern Queensland, and it inhabits the state's rainforests.



1606220 maxicards (2)

TECHNICAL DETAILS

Issue date	9 June 2009
FDI withdrawal date	7 July 2009
Denominations	1 x 55c, 1 x \$2.75
Stamp design	Sally Piskuric, Australia Post Design Studio
Product design	Sharon Rodziewicz, Australia Post Design Studio
Printer	McKellar Renown
Paper (gummed/s-a)	Tullis Russell
Printing process	Lithography
Stamp size	26mm x 37.5mm
Minisheet size	106mm x 70mm
Perforations	14.6 x 13.86
Sheet layout	Modules of 50
National postmark	Brisbane, QLD 4000



1606126 stamp pack

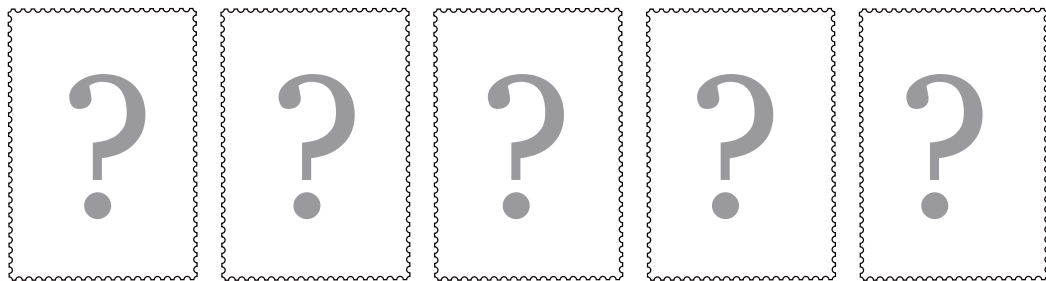


Celebrating
200
years

AUSTRALIA POST – 200 YEARS

26 JUNE 2009

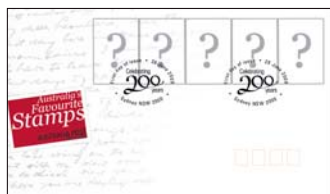
Australia's Favourite Stamps



55c.....?
55c.....?
55c.....?
55c.....?
55c.....?

More than 2,500 Australian stamps have been issued in the past 200 years, including those produced by individual states prior to Federation. Our stamps have marked the celebrations, milestones and achievements that have shaped us as a nation.

Australian stamps cover a range of subjects and themes, and have been used to record the past and to celebrate our culture. They include the Sydney Views and the Kangaroo and Map series of the pre-decimal era, as well as royal portrait stamps issued for many years.



1611002 first day cover (gummed)

In this very special year, Australia Post celebrates its own milestone and recognises the significance of stamps to the Australian community. This stamp issue is a result of the search for Australia's favourite stamp, which began in March this year. The stamps will be featured at www.auspost.com.au/stamps and in the next *Stamp Bulletin*.

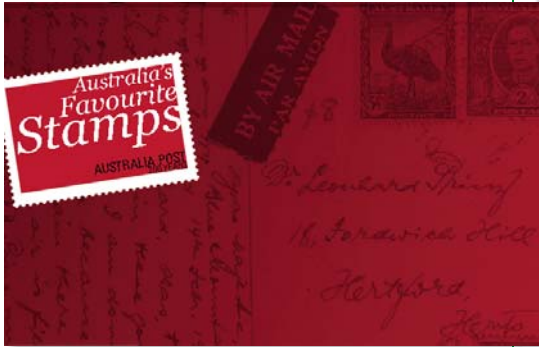
How it happened

A selection of 150 stamps appeared in daily newspapers around the country and online, with the Australian public asked to vote for its favourite. The five most popular stamp designs would make up this special issue – the second in a series to celebrate 200 years of postal services in Australia. The response was astounding.

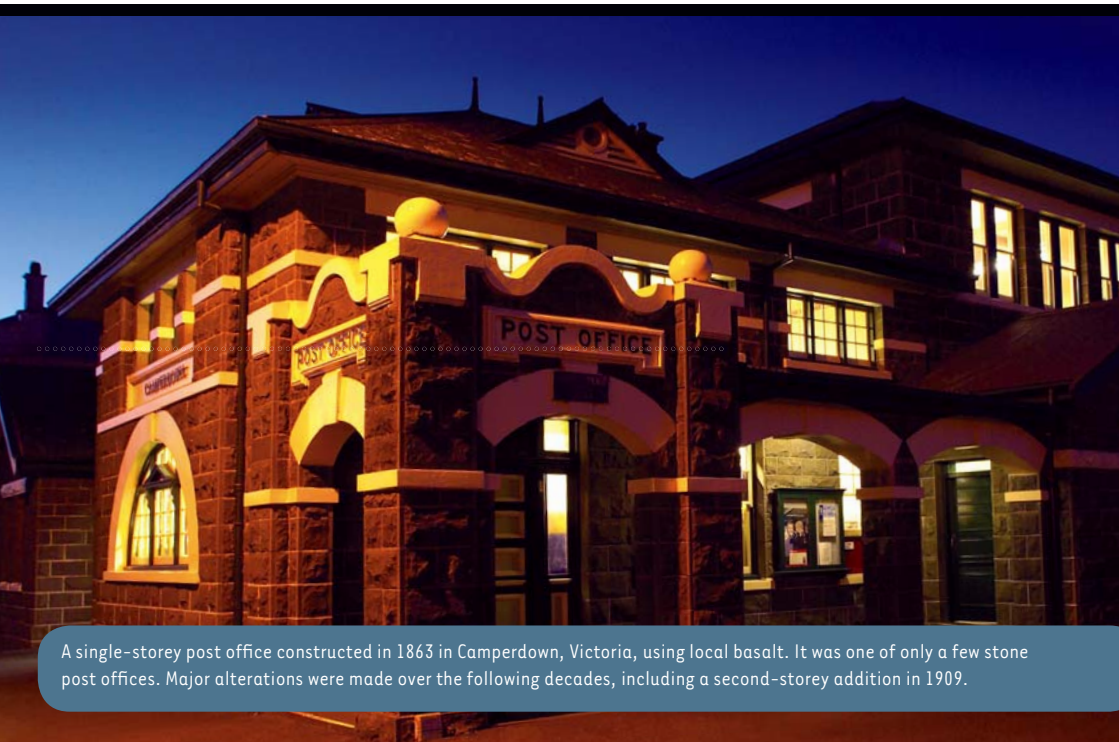
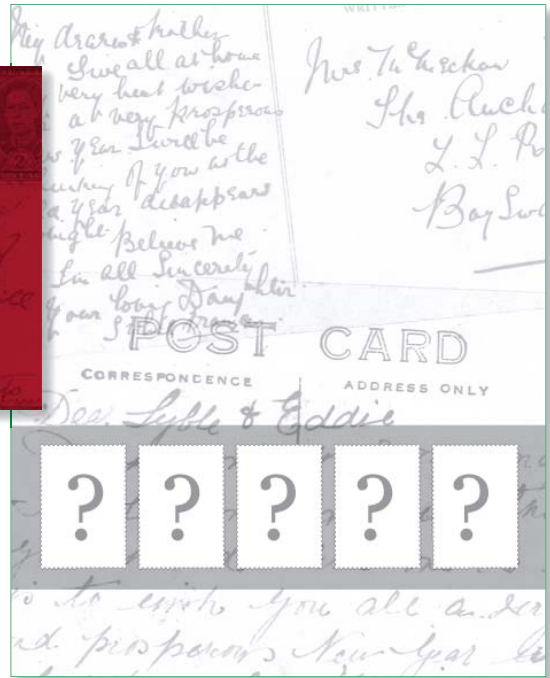
Limiting the selection was always going to be hard, with the great number of stamps released over the 200 years. We consulted with a number of experts to ensure we presented stamp designs that were iconic and representative of not only Australian culture and heritage, but also marked major events, significant achievements and milestones.



1611008 postal and numismatic cover



1611126 stamp pack



A single-storey post office constructed in 1863 in Camperdown, Victoria, using local basalt. It was one of only a few stone post offices. Major alterations were made over the following decades, including a second-storey addition in 1909.

Celebrating
200
years

First day of issue • 26 June 2009
Celebrating
200
years
Sydney NSW 2000

Cobb and Co. coaches were used to deliver the mail between major cities and regional townships in the 1800s. At one stage, Australia's network of tracks and roads was the largest in the world. The development of the railway triggered the phasing out of the road service, with the last delivery made on the Yuleba Surat run (western Queensland) in 1924.

TECHNICAL DETAILS

Issue date	26 June 2009
FDI withdrawal date	24 July 2009
Denominations	5 x 55c (se-tenant)
Stamp/product design	Jo Mure, Australia Post Design Studio
Printer	Energi Print
Paper (gummed/s-a)	Tullis Russell/B90 s/a
Printing process	Lithography
Stamp size	37.5mm x 26mm
Perforations	13.86 x 14.6
Sheet layout	Modules of 50
Special feature	Decorative gutter
National postmark	Sydney, NSW 2000



1611300 prestige cover



Australia Post First Postmaster Two-Coin Set. Released on 1 June 2009.

1611403

RRP \$119.95



\$1 base metal



\$1 silver proof

\$1 silver proof can also be purchased individually. 1514523 \$89.50

**Look out for more exciting coins
celebrating “Australia Post – 200 years”
in your next *Stamp Bulletin*.**

RAM subscription coin!

**Orders to be received at the
Philatelic Bureau by 18 May 2009.**

Released 8 June.
The restricted mintage is decided by the
number of subscriptions taken.

Contact the Australian Philatelic Bureau
on 1800 331 794 (within Australia),
on +61 3 9887 0033 (from overseas)
for further details about this
special product.

1514525

RRP \$85.00



* Image is an impression only.

TALKING STAMPS

WITH RICHARD BRECKON

Stamps after Federation

Federation, in 1901, gave Australia a single national postal system – the Postmaster-General's Department – which replaced six separate colonial systems. Collectors eagerly anticipated an imminent release of Commonwealth stamps to supersede separate issues of colonial (now state) stamps. It was not to be.



1913
1d Kangaroo
and Map

The Postmaster-General's Department decided immediately after Federation to continue producing stamps for each state, and that the stamps would only be used for postage in the state concerned. The Federal Constitution specified that state governments would be reimbursed with the surplus revenue earned by departments transferred to Commonwealth control. These "book-keeping" arrangements applied until 1910 and, as a result, the state postal systems operated independently in order for surplus revenue to be calculated accurately. In turn, this meant separate stamps were maintained for use for each state.

Until 1910, the public could only use state stamps for postage in the state represented – stamps of the other states were not valid. State stamps were

eventually made interchangeable for postal use in 1910, although it was not until 1913 that state stamps, most of which featured a youthful Queen Victoria, were finally replaced by a uniform series of Commonwealth stamps.

In January 1911, a public competition was held to produce the first Commonwealth stamp design that "must contain features characteristic of Australia". The winning entry, chosen from 1,051 designs, was submitted by Herman Altmann of Melbourne, whose stamp featured King George V flanked by a kangaroo, emu, crown and shields of each state's emblem. However, Altmann's winning design was never used for a stamp.

The Kangaroo and Map stamps

A newly appointed Postmaster-General, Charles Frazer, rejected the Altmann design. Frazer wanted a stamp that would be a more effective advertisement for Australia overseas than one featuring only the King's head. To this end, Frazer arranged for a stamp design to be prepared featuring a kangaroo standing on an outline map of Australia. The "exceedingly simple" stamp was widely mocked: the absence of the King's head offended monarchists; the choice of a kangaroo as a symbol seemed ridiculous to some people; and the simplicity of the design was at odds with embellished stamps of the era.

Unmoved by the criticism, the Kangaroo stamps were issued early in 1913 in 14 denominations, ranging from a halfpenny (½d) to two pounds (£2). They were



1914
1d
King George V

printed in different colours so that postal staff would not confuse the various denominations in poor lighting. The stamps up to two shillings (2s.) were printed in one colour; those of 5 shillings or higher in two colours.

Within a few months of the Kangaroo and Map stamps being issued they were almost withdrawn. Following a change of government in June 1913, a new Postmaster-General, Agar Wynne, gave instructions to scrap the Kangaroo and Map stamps. A design featuring King George V flanked by a kangaroo, emu, crown and wattle (loosely based on the Altmann design) was produced for several stamps, including the one penny for basic letter postage, issued during 1914–15. However, the outbreak of World War I and another change of government during August–September 1914 prevented the plan for a complete replacement of the Kangaroo and Map stamps from being carried into effect.

Instead, the Kangaroo and Map and George V stamps co-existed for nearly 25 years, until the accession of King George VI required an entirely new series of stamps to be issued (1937–38). For some unexplained reason, the 2s. Kangaroo and Map stamp was not replaced at this time and the stamp remained until 1948 as the sole survivor of Postmaster-General Frazer's "advertisement for Australia".

The perfect gift for special celebrations ...

**Finely
crafted pens**
available in two finishes

- choose ballpoint or fountain pen
- leatherette presentation box
- coloured stone in cap
- two elegant designs

Ballpoint \$54.95

Nib \$69.95

"Sapphire"

"Ruby"

This elegant ladies watch is available in three finishes

- Rose-gold features a one-cent coin in the clock face
- Yellow-gold and silver finishes feature a six pence or medallion

Select the year for your base coin or medallion for both the gold and silver boutique watches.

Genuine six pence available for:
1910-1912; 1914;
1916 to 1928;
1934 to 1936;
1938 to 1946;
1948 & 1950-1963.

Commemorative medallion dials are used for 1913, 1915; 1929-1933; 1937; 1947; 1949; and 1964- the present.

\$279 each



"With Love" greeting card

Comes with an elegant
matching bookmark
and prepaid envelope*

\$5.95 each

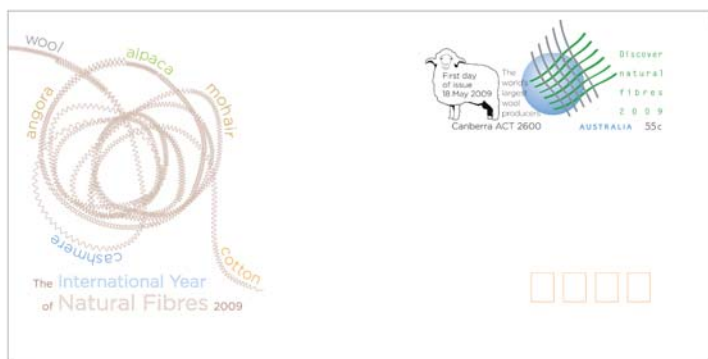
*PPE is only included with
standing orders



United Nations International Year of Natural Fibres

18 May 2009

This pre-stamped envelope commemorates the United Nations International Year of Natural Fibres, which seeks to emphasise the value of sustainable natural fibre industries to farmers, communities, and consumers across the world. Wool is Australia's most valuable natural fibre industry, with exports valued at over \$2.7 billion last year, accounting for over a quarter of the world's wool production.



0479134 pse

23rd Asian International Stamp Exhibition



SSS

1514526

\$9.95

A unique collectable, this Souvenir Stamp Sheet features the 12 zodiac stamps as issued in the 2009 LNY Ox Zodiac Sheetlet. Produced exclusively for the 23rd Asian International Stamp Exhibition this stamp sheet is numbered and limited to a print run of 8,000.

Minisheet

0478229

\$2.20

Featuring a stunning image of the Hong Kong Convention Centre where the 23rd Asian International Stamp Exhibition is being held this miniature sheet offers the Tourist Precinct 55 cent stamps in a block of four.



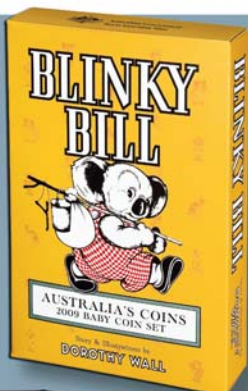


Australian Government
Royal Australian Mint



1514509
International Polar Year
Aurora Australis Hologram Coin

\$95.00



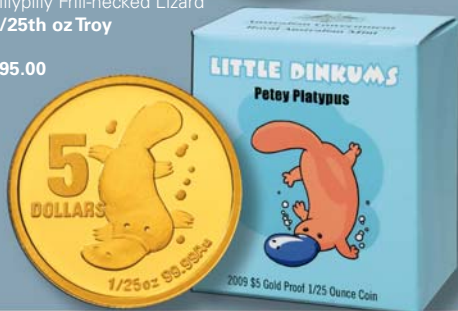
1514426
Blinky Bill
2009 Baby Proof Set

\$120.00



1514510
2009 \$5 Gold Proof
Little Dinkums
Lillipilly Frill-necked Lizard
1/25th oz Troy

\$95.00



1514511
2009 \$5 Gold Proof
Little Dinkums
Petey Platypus
1/25th oz Troy

\$95.00

1514469 - Mintmark C
\$1 uncirculated 60th Anniversary
of Australian Citizenship coin.
Mintmark (C)
Privy marks (B, M, S)

\$3.00





Australian Government
Royal Australian Mint

1514430
International Year
of Astronomy
2009 Six Coin
Uncirculated Year Set

\$30.00



1514425
2009 Wedding Year Set
Gem Uncirculated

\$95.00

Important celebrations need something special

**The ideal gift for
birthdays and
naming days
...and you can
personalise the
card, as well!**



1514454
2009 Baby Coin Card
\$12.95



1514479
Discover Australia
The Dreaming Series
1/10 oz Gold Proof
Brolga

\$260.00



1514496
Discover Australia
The Dreaming Series
1 oz Silver Proof
Five-Coin Set

\$447.50



1514493
Discover Australia
The Dreaming Series
1 oz Silver Proof Echidna

\$89.50



1514495
Discover Australia
The Dreaming Series
1 oz Silver Proof King
Brown Snake

\$89.50 each



1514506
Discover Australia
The Dreaming Series
1/10 oz Platinum
Proof Kangaroo

\$335.00 each



1514486
2009 Discover Australia
The Dreaming Series
1/25 oz Gold Proof
Dolphin

\$130.00 each

STAMP SHOWS AND EVENTS

MILDURA PHILATELIC SOCIETY ANNUAL STAMP FAIR (Vic)

2–3 May 2009

To be held at the Sacred Heart Hall (rear of church), 11th Street, Mildura. Local and Melbourne dealers to attend. Hours will be 10am to 4pm on both days. Contact Lyn Douglass (Sec.) on 03 5023 5891 or at PO Box 1798, Mildura, Vic 3502.

JUNCTION PARK STAMP CLUB (INC) ANNUAL STAMP FAIR (Qld)

4 May 2009

This fair will be held on Labour Day at the McGregor State School Music Hall (rear of shopping centre). Lots of prizes to be won. Enquiries contact Victor on 08 3272 8304.

RICHMOND STAMP CLUB ANNUAL STAMP SHOW (NSW)

16 May 2009

To be held at the Richmond School of Arts, 26 West Market Street (corner March Street) in Richmond. Hours of the event will be 10am to 3pm and dealers will attend. Admission is FREE.
For information contact 02 4576 5031 or 02 4578 1527.

WAGGA STAMP & COIN FAIR (NSW)

16 & 17 May 2009

To be held at the Sturt Public School Hall, White Avenue, Koorngal. Hours will be 9am to 4pm on both days, admission is FREE. Dealers will attend to buy, sell and offer valuations. For information contact the secretary on 02 6922 3393.

VICTORIAN PHILATELIC COUNCIL ANNUAL CONGRESS (Vic)

16 May 2009

The VPC will hold their 56th Annual Congress during the Eastern Suburbs Philatelic Competition at the Mount Waverley Community Centre. Congress will be commemorated with an overprint on the "Polar" minisheet at a cost of \$10 each. Mail orders to VPC, GPO Box 9800, Melbourne, Vic 3001.

ILLAWARRA STAMP & COIN FAIR (NSW)

30 May 2009

This event has been organised by AAA Stamps and will be held at the Master Builders Club, Church Street, Wollongong.

Hours will be 9.30am to 3.30pm and entry is \$2. Contact Steve Burton on 0432 540 760 for details.

PENINSULA STAMP CLUB (Vic)

8 June 2009

A "Stamps, Coins and Phonecards Fair" will be held at the Dromana Uniting Church Hall, corner Point Nepean Road and McCulloch Street, Dromana.

Hours will be 10am to 4pm with refreshments available. Admission is FREE.

For further information contact J H Thomas on 0418 322 315.

CENTRAL COAST STAMP & COIN SHOW (NSW)

20 June 2009

This event will be held at the Entrance Leagues Club, Bateau Bay. Hours will be 10am to 3.30pm and local and interstate dealers will attend. Admission is \$2. Contact Steve on 0432 540 760 for details.

ROCKINGHAM STAMP SHOW (WA)

5 July 2009

This event will be held at Kolbe College in Rockingham from 10am to 4.30pm and is organised by the Philatelic Societies of Fremantle, Mandurah and Rockingham under the banner of the West Australian Philatelic Council (WAPC).

For details contact Bernard Buckland on 08 9527 6090 or email bernardbuckland@bigpond.com.

WINTER'S DAY WITH STAMPS (NSW)

18 July 2009

This event will be held at the Dougherty Centre, Victor Street, Chatswood. Hours will be 10am to 4pm with a range of attractions to suit all ages. Admission is FREE and special personalised stamps available. For further details phone 02 9419 7354.

THE AUSTRALIAN STAMP VARIATIONS CATALOGUE: 1966–2008 by David Mallen

Available from the ASV website:
www.users.bigpond.net.au/asv

FIRST DAY OF ISSUE POSTMARKS

Not Just Desserts

15 May 2009
Eaton, WA 6232



FIRST DAY OF ISSUE
15 MAY 2009
EATON WA 6232



WWF: Dolphins of the Australian Coastline

26 May 2009
Sorrento, Vic 3943



150th Anniversary of Queensland

9 June 2009
Brisbane GPO, Qld 4000

Australia Post – 200 Years (Part II)

26 June 2009
Sydney, NSW 2000



PICTORIAL POSTMARKS Hawks Nest, NSW 2324

Introduced: 26 May 2009
Features a hawk in the design.
Permanent/pictorial.

TEMPORARY POSTMARKS Richmond, NSW 2753

Introduced: 4 May 2009
Celebrating the 150th anniversary of Richmond Parish and featuring an historic church.

Williamstown, Vic 3016

To celebrate the 125th Anniversary of the arrival of three Victorian colonial Naval ships in Port Phillip. Available from the Williamstown Post Office on the 25 June only.



CONTACT DETAILS

To inform us of any upcoming events please write to us at:

Stamp Bulletin Editor
Philatelic Group
GPO Box 1777
Melbourne VIC 3001
Australia

Fax (03) 92047744 or email
stampbulletin@auspost.com.au

Wudinna, SA 5652

Replaced: 2 February 2009
Features an aerial image of Mount Wudinna. Impressions available from Postal Manager, Wudinna LPO SA 5652.



Port Victoria, SA 5573

Replaced: 16 February 2009
Features an image of the last windjammer port and ship with a new date reel. Impressions available from Postal Manager Port Victoria LPO SA 5573.



Christmas Island, WA 6798

Replaced: 16 February 2009
Impressions are available from the Postal Manager, Christmas Island.

Chiltern, Vic 3683

Introduced: 23 February 2009
Impressions available from the Postal Manager, Chiltern.

14 May 2009**23rd Asian International Stamp Exhibition**

Optional minisheet

15 May 2009**Not Just Desserts**

Supplement design set (gummed),

design set s/a,

Optional s/a booklet of 10

gutter strip 10 x 55c with design

26 May 2009**WWF: Dolphins of the Australian Coastline**

Supplement design set (gummed),

design set s/a, minisheet

Optional pages 3 x s/a sheetlets of 5

9 June 2009**Queensland – 150 Years**

Supplement design set (gummed)

Optional nil

26 June 2009**Australia Post – 200 Years, Australia's Favourite Stamps**

Supplement design set (gummed),

design set s/a

Optional gutter strip 10 x 55c with design,

s/a strip of five, s/a collector pack

Mail order codes**1611235 Australian Supplement****\$54.50****1611236 Australian Optional****\$54.60**

In the case of self-adhesive stamps, Australia Post will supply collector packs, full booklets or sheetlets only.

NEW ISSUES

Mail order (retail)	Product description	Price	Planned withdrawal date
15 May 2009	Not Just Desserts		
1600067	Stamps (4 x 55c)	\$2.20	30 November 2009
1600002 (36660)	First day cover (gummed)	\$2.50	12 June 2009
1600005 (36659)	First day cover (blank)	\$0.30	30 November 2009
1600182 (36653)	Booklet (10 x 55c)	\$5.50	30 November 2009
1600250	Chequebook (20 x 10 x 55c)	\$110.00	30 November 2009
1600126 (36662)	Stamp pack	\$2.65	30 November 2009
1600220 (36663)	Maxicard set (4)	\$5.20	30 November 2009
1600240 (36658)	Gutter (10 x 55c – with design)	\$5.50	30 November 2009
1600184 (36664)	Prestige booklet	\$10.95	30 November 2009
26 May 2009	WWF: Dolphins of the Australian Coastline		
1607067	Stamps (1 x 55c, 1 x \$1.35, 1 x \$1.40, 1 x \$2.05)	\$5.35	30 November 2009
1607142 (36813)	Minisheet	\$5.35	30 November 2009
1607250 (36790)	Sheetlet (five x \$1.35)	\$6.75	30 November 2009
1607251	Chequebook (20 x five x \$1.35)	\$135.00	30 November 2009
1607252 (36791)	Sheetlet (five x \$1.40)	\$7.00	30 November 2009
1607253	Chequebook (20 x five x \$1.40)	\$140.00	30 November 2009
1607254 (36792)	Sheetlet (five x \$2.05)	\$10.25	30 November 2009
1607255	Chequebook (20 x five x \$2.05)	\$205.00	30 November 2009
1607002 (36816)	First day cover (gummed)	\$5.65	23 June 2009
1607013 (36817)	First day cover (minisheet)	\$5.65	23 June 2009
1607126 (36818)	Stamp pack	\$11.15	30 November 2009
1607220 (36819)	Maxicard set (4)	\$8.35	30 November 2009
1607212	Postcard set (4)	\$6.00	30 November 2009
1607350 (36820)	Stamp and Medallion cover	\$19.95	30 November 2009
1607241 (36800)	Gutter (10 x 55c – no design)	\$5.50	30 November 2009
1607242 (36804)	Gutter (10 x \$1.35)	\$13.50	30 November 2009
1607243 (36808)	Gutter (10 x \$1.40)	\$14.00	30 November 2009
1607244 (36812)	Gutter (10 x \$2.05)	\$20.50	30 November 2009

NEW ISSUES

Mail order (retail)	Product description	Price	Planned withdrawal date
9 June 2009			
	Queensland – 150 Years		
1606067	Stamps (1 x 55c, 1 x \$2.75)	\$3.30	30 December 2009
1606142 (36893)	Minisheet	\$3.30	30 December 2009
1606002 (36896)	First day cover (gummed)	\$3.60	7 July 2009
1606013 (36897)	First day cover (minisheet)	\$3.60	7 July 2009
1606005 (36895)	First day cover (blank)	\$0.30	30 December 2009
1606126 (36898)	Stamp pack	\$7.05	30 December 2009
1606220 (36899)	Maxicard set (2)	\$4.80	30 December 2009
1606241 (36888)	Gutter (10 x 55c)	\$5.50	30 December 2009
1606242 (36892)	Gutter (10 x \$2.75)	\$27.50	30 December 2009
26 June 2009			
	Australia's Favourite Stamps		
1611067	Stamps (5 x 55c)	\$2.75	31 December 2009
1611300 (36863)	Prestige cover	\$9.95	31 December 2009
1611002 (36839)	First day cover (gummed)	\$3.05	24 July 2009
1611003 (36840)	First day cover (s-adhesive)	\$3.05	24 July 2009
1611005 (36838)	First day cover (blank)	\$0.30	31 December 2009
1611126 (36841)	Stamp pack	\$3.20	31 December 2009
1611220 (36842)	Maxicard set (5)	\$6.50	31 December 2009
1611241 (36837)	Gutter (10 x 55c – with design)	\$5.50	31 December 2009
1611008 (36843)	Postal and numismatic cover	\$14.95	31 December 2009
1611210 (36834)	Roll (200 x 55c)	\$110.00	31 December 2009
1611200 (36836)	Strip of five s-adhesive from a roll	\$2.75	31 December 2009
1611223 (00000)	Collector pack	\$9.15	31 December 2009
Miscellaneous			
1514512 (MO)	Sapphire crafted Pen (ballpoint)	\$54.95	-
1514513 (MO)	Ruby crafted Pen (ballpoint)	\$54.95	-
1514518 (MO)	Sapphire crafted Pen (fountain)	\$69.95	-
1514519 (MO)	Ruby crafted Pen (fountain)	\$69.95	-
1514514 (MO)	Ladies watch (Rose gold with one cent face)	\$279.00	-
1514515 (MO)	Ladies watch (Silver with sixpence face)	\$279.00	-
1514516 (MO)	Ladies watch (Yellow gold with sixpence face)	\$279.00	-
1514517 (MO)	"With Love" gift card (includes PPE and bookmark)	\$5.95	-
1514526	23rd Asian Stamp Exhibition Souvenir stamp sheet	\$9.95	-
0478229	23rd Asian Stamp Exhibition Minisheet	\$2.20	-
0479134	United Nations International Year of Natural Fibres PSE	\$0.65	-

In a hurry to order the latest issue?

You can order new and recent Australian stamp issue products online at
www.auspost.com.au/stamps

Planned withdrawal dates may be changed without notice to meet emergent postal requirements. Advice of such changes will be published in the first available *Stamp Bulletin Australia* in retrospect. All prices are GST inclusive and are recommended. Contact the Australian Philatelic Bureau (FREECALL 1800 331 794 within Australia, +61 3 9887 0033 overseas) or visit www.auspost.com.au/stamps for the current price at the time you place your order.

ITEMS FROM THE 2008 IMPRESSIONS CATALOGUE ARE STILL AVAILABLE.



**90th Anniversary of the End of
WWI Postal Numismatic Cover**

\$14.95
0306255



Aviation A380 Minisheet Stamp Pack

\$15.95
0306330



Mickey Mouse 80 Years of Fun Frame

\$139.95
0306361
(Australian residents only)

**Visit www.auspost.com.au/impressions
to view the range.**
To order, call us on 1800 331 794 or order online.

If you have misplaced your 2008 Impressions catalogue,
please call us for a replacement.